

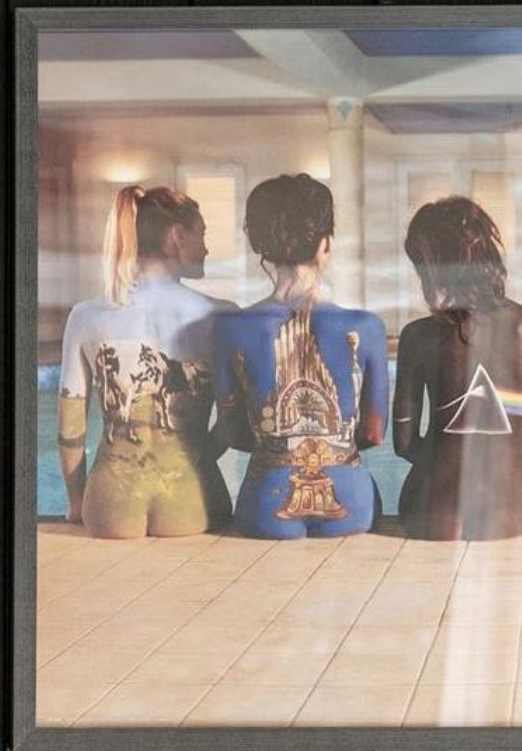
**VALMOND  
& GIBSON**

FACADE SYSTEMS

**interlo** 

**Product Introduction**

non-combustible • interlocking • rainscreen panels





Adding to Valmond & Gibson's product range is interloQ, a locally designed extruded aluminium cladding system that allows complete architectural freedom.



### 20 year warranty

interloQ has up to a 20 year warranty when installed by a qualified installer.



### 100% recyclable material

interloQ is 100% recyclable offering an eco-friendly solution that makes meeting sustainable construction demands much easier.

interloQ is resistant to heavy metal erosion which ensures that both personal and global environments are improved



### Certified non-combustible material

CSIRO tested to AS1530.1

interloQ is an extruded Aluminium product making it ideal for use in all applications where the need for non-combustible cladding is required; such as Apartments, Schools & Hospitals.

It is certifiably non-combustible in accordance with the NCC Section C.

# What is interloQ

**Non-Combustible**

**Interlocking**

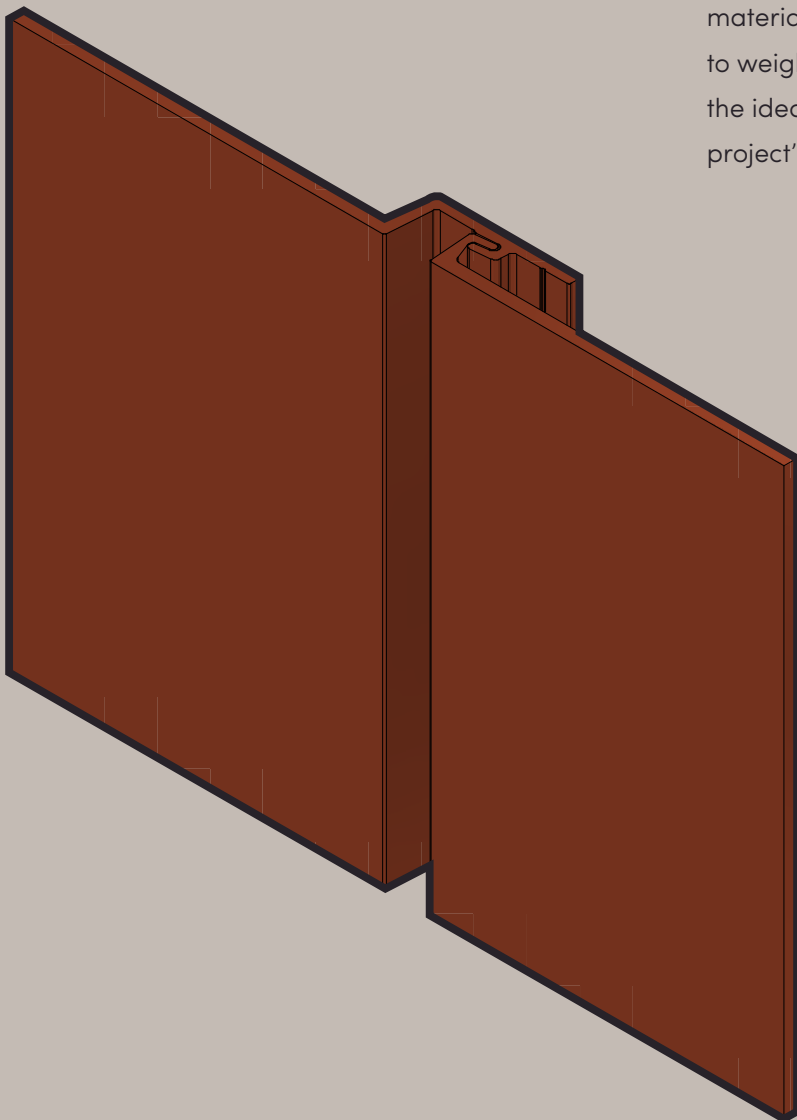
**Modern Australian Design**

**Versatile**

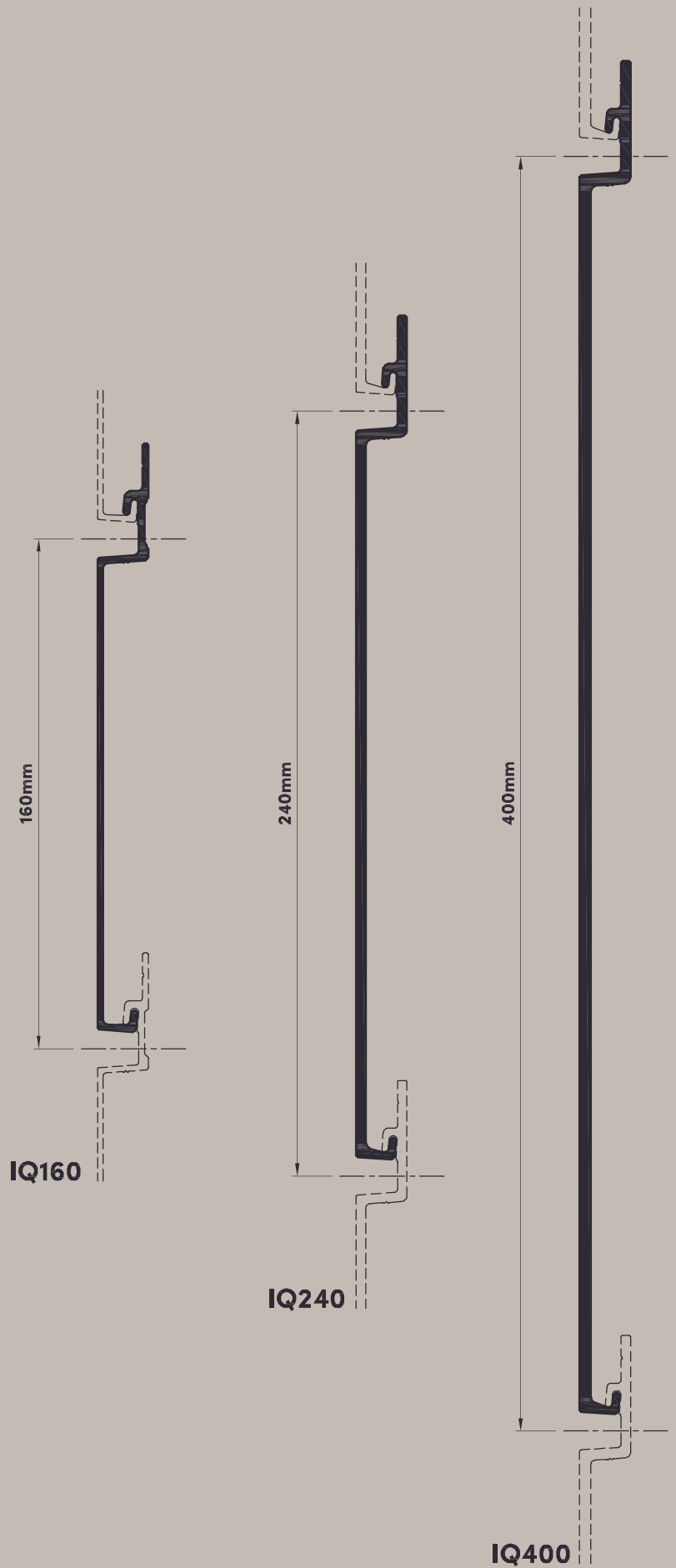
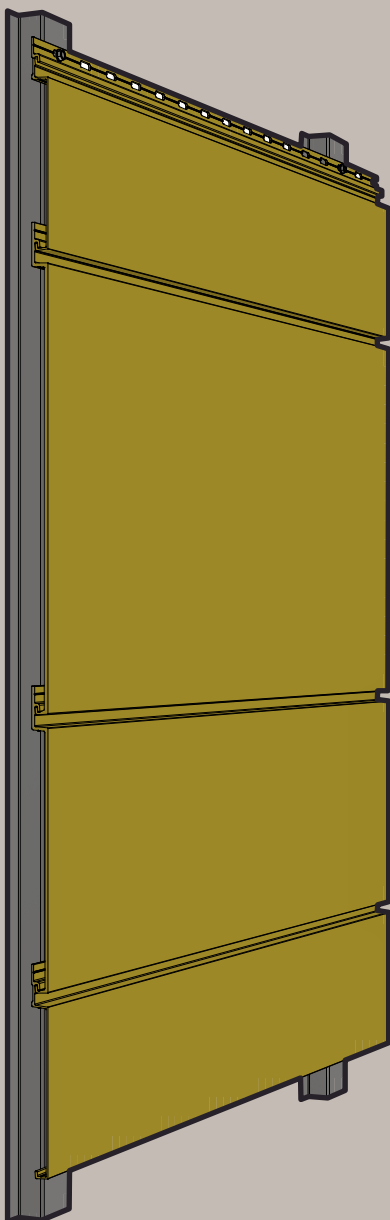
interloQ is a locally designed extruded aluminium cladding system. Designed to suit commercial or residential projects, this certified non-combustible product allows complete architectural freedom.

With decades of industry experience, interloQ has been crafted for seamless integration. Installed simply as a clean, sharp-lined classic or in conjunction with our conneQt adaptors, interloQ provides endless design possibilities.

Being extruded Aluminium, it is the ideal choice of material. Enabling a consistent shape, high strength to weight ratio, durability and corrosion resistance it is the ideal base for various finishing options to suit any project's architectural requirements.



- Unique connection design
- Interchangable panels
- Multiple panel sizes
- Common installation method
- Pre-punched fixing slots



# Product specs

As with all Valmond & Gibson products, interloQ and compatible connecQt adaptors are made from the highest quality raw materials. Each Valmond & Gibson product is put through a rigorous auditing process that ensure a consistently unprecedented level of quality, durability and reliability.

interloQ and connecQt extrusions are designed in accordance with AS1170 and are quality controlled to meet extrusion tolerances set out in AS/NZS 1866:1997.

## interloQ<sup>®</sup> technical data sheet

	PROPERTIES	UNITS	VALUES
Physical	Alloy		6060/6063
	Temper		T5
	Material base thickness	mm	1.8 ~ 3.5
	Raw density	kg/m <sup>3</sup>	2680
Mechanical	Hardness, Brinell	HB	60
	Tensile strength (Ultimate)	MPa	180
	Tensile strength (Yield)	MPa	140
	Modulus or elasticity	GPa	68
	Elongation	%	11
Thermal	Linear thermal expansion	µm/m/°K	23
	Melting range	°C	616-654
	Thermal conductivity	W/m.k	210
Electrical	Electrical resistivity	ohm(Ω).m	0.0316
	Electrical conductivity - Equal Volume	MS/m	32
	Electrical conductivity - Equal Mass	MS/m	105
Acoustic	Sound absorption factor	NCR	0.05
	Sound reflection	%	95

# Product testing

## Fire Resistance

TEST STANDARD	TESTING AUTHORITY	TEST REPORT NUMBER	RESULT
AS1530.1:1994 NCC Vol 1. Specification C1.8 Clause 5(a) Combustibility test for materials	CSIRO NATA accreditation No. 165	FNC12595	Non- combustible

## Weather Performance

TEST STANDARD	TESTING AUTHORITY	TEST REPORT NUMBER	RESULT
AS/NZS 4284:2008 NCC Vol 1. Specification C1.8 Clause 5(c) Weather performance test	Ian Bennie and Associates NATA accreditation No. 2371	2022-031-S1	Pass at ±1500Pa SLS



# Colour & finishes

interloQ and conneQt can be finished with any of the available Aluminium finishing methods. From a wide array of powder coat colours, woodgrain effects and anodising you can be sure to achieve the desired look for your project.



**Powder Coat**



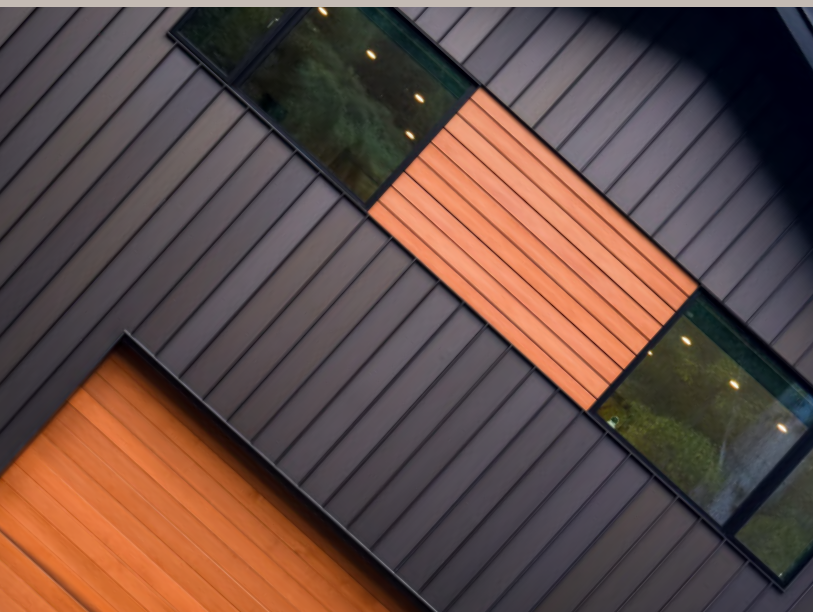
**Anodised**



**Woodgrain**



**Custom Colours**



# Powder Coat Range



## Standard Powdercoat Range (INTERPON D2525)

Interpon D2525 meets the needs of the most demanding projects. Developed specifically for architectural components, the range is ideal for both exterior and interior aluminium applications.

PEARL WHITE MATT YA278A	PEARL WHITE GLOSS YA075A	APPLIANCE WHITE SATIN YA196A	SURFMIST® MATT YA236A	LUNAR GREY MATT YP273A
DRIFTWOOD MATT YL258A	SILVER PEARL MATT YY230A	ANODIC NATURAL MATT YY223A	CITI PEARL MATT YY245A	LUXE BRONZE PEARL MATT YY255A
SCINTILLATING CHAMPAGNE MATT YW26FC	CHAMPAGNE PEARL MATT YY276A	NOBEL SILVER PEARL SATIN YX136A	PEWTER PEARL SATIN YY124A	ETERNAL SILVER SATIN YW100C
GREY SATIN YP174A	TIMBERLAND MATT YP275A	TIMBERLAND SATIN YP175A	MONUMENT® MATT YL264A	BRONZE PEARL MATT YY225A
TITANIUM PEARL SATIN YY163A	TITANIUM PEARL MATT YY263A	CHARCOAL MATT YL238A	CHARCOAL SATIN YP116A	DARK GREY MATT YP278A
EBONY MATT YN201A	BLACK SATIN YN167A	CHARCOAL PEARL MATT YY237A	ENDURA BRONZE MATT YY248A	ASTEROID PEARL MATT YY270A




The colours on this printed brochure are a guide only. For accurate colour representation please refer to our physical samples.

# Powder Coat Range



## Structura Range (INTERPON D2525)

Interpon D2525 Structura is a fine texture superdurable powder coating, created with aesthetics and high performance in mind. Interpon D2525 Structura is the perfect powder coating for your contemporary design. It is more resistant and ensures your buildings will stand the test of time.

				
PEARL WHITE TEXTURE YA378A	SURFMIST TEXTURE YA346A	GRIS TEXTURE YL325A	QUANTUM GREEN PEARL TEXTURE YY315A	ORDOS TEXTURE YY324A
				
SCINTI CHAMPAGNE TEXTURE YY318A	GOLDEN TOUCH TEXTURE YY358A	SILVER TEXTURE YX369A	GONDAR GOLD TEXTURE YY372A	CORE TEN TEXTURE YX365A
				
MEDIUM BRONZE TEXTURE YY398A	ASTEROID TEXTURE YY369A	BRILLIANT TEXTURE YY374A	BASS TEXTURE YY373A	MONUMENT TEXTURE YL364A
				
FLAXPOD TEXTURE YL395A	IRONSAND TEXTURE YM333A	BLACK TEXTURE YN306A		



The colours on this printed brochure are a guide only. For accurate colour representation please refer to our physical samples.

# Powder Coat Range

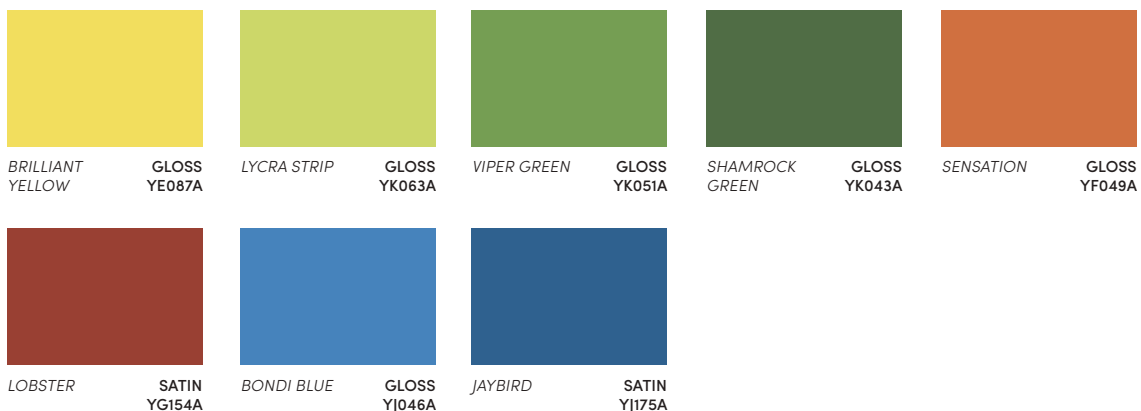


## Flat Matt Range (INTERPON D2525)

Interpon D2525 Flat Matt range is a designers dream. Non-reflective surfaces open up new possibilities in aesthetics and the interaction of light with surfaces.



## Color Vitality Range (INTERPON D2525)



The colours on this printed brochure are a guide only. For accurate colour representation please refer to our physical samples.

# Anodised Range



Anodising is an electro-chemical treatment of the aluminium resulting in a hard durable finish that maintains the beauty and natural metallic lustre of aluminium while reinforcing its natural ability to withstand the elements. Anodising is an integral finish, that cannot flake, peel, or blister. State of the art colour measuring equipment introduced to Australia by AAF (Australian Aluminium Finishing) has now become an industry standard, unique to AAF.

---

## Matt Range (AAF Evershield®)

The traditional sophisticated matt lustre (10% Gloss).



---

## Bright Range (AAF Evershield®)

A brilliant finish that makes your product stand proud (80% Gloss).



The colours on this printed brochure are a guide only. For accurate colour representation please refer to our physical samples.

# Anodised Range



---

## Illustro Range (AAF Evershield®)

Best of both, this hybrid provides an elegant look & feel (30% Gloss).



PALLADIUM COIN E87CL



AZTEC SILVER E68NL



MONACO STONE E65TL



BOLD AS BRASS E58TL



MEDALLION BRONZE E44TL



MACCHIATO E36TL



BRONZE MONUMENT E30TL



GUN BARREL E25TL



GOLD ODYSSEY E78GL

---

## The Terra Rossa Collection (AAF Evershield®)

Australia's first Copper Anodised Aluminium Range.

This range of 8 unique colours is the first of its kind in Australia. The copper finish is created using inorganic copper compounds to produce characteristics of true metal colouring, making it the most durable copper anodised aluminium available.



MATT PROSECCO E70RM



MATT KALAHARI E53RM



MATT DESERT HAZE E59RM



MATT MERLOT E35RM



ILLUSTRO BLUSH E64RL



ILLUSTRO TUSCAN RED E47RL



ILLUSTRO COPPER COIN E56RL



ILLUSTRO CABERNET E36RL



*The colours on this printed brochure are a guide only. For accurate colour representation please refer to our physical samples.*

# Woodgrain Range



## Wood-Effect Powder Coating (Ezy HD<sup>2</sup> by DFV)

Ezy HD<sup>2</sup> wood-effect powder coating achieves maximum definition and maximum durability using an advanced powder on powder coating system applied to architectural aluminium.

This alluring range was designed to meet the need of surfaces that are particularly exposed to UV rays and extreme weather conditions.

Ezy HD<sup>2</sup> is unique to the Australian market and produces a finish with realistic look and feel as well as a superior, highly durable performance.

All 12 Ezy HD<sup>2</sup> wood effect colours are available in 3 grain patterns; Oak, Ash, and Cedar.



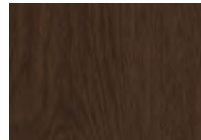
GREY



GOLDEN



WHITE



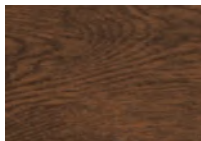
VOLCANO



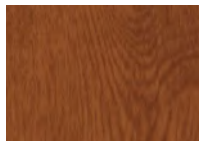
WESTERN RED



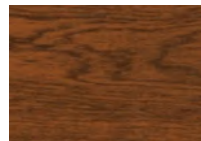
AMERICAN



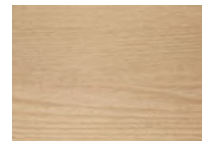
BROWN



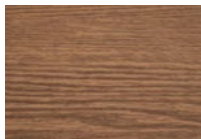
RED



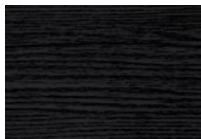
ROYAL



BLONDE



AUSTRALIAN



EBONY

**DFV**  
AUSTRALIA

*The colours on this printed brochure are a guide only. For accurate colour representation please refer to our physical samples.*

# Fabrication process



## Cutting

interloQ can be cut with most of the commonly available aluminium cutting saws.

Track-guided circular saws may be required for wide extrusions. The blade selection must be discussed with the saw manufacturer or supplier in order to achieve a clean, burr-free edge.

---



## Machining

interloQ can be drilled using a high-quality High-Speed Steel (HSS) centre point drill bit typically used for aluminium.

---

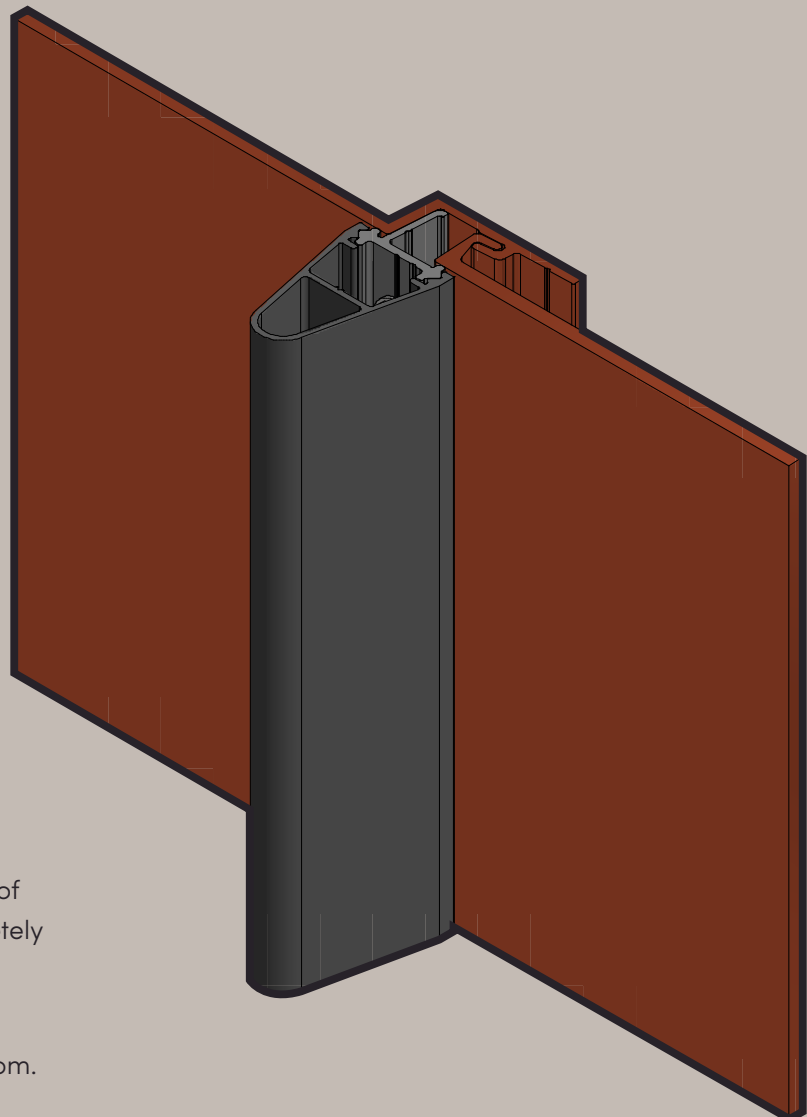
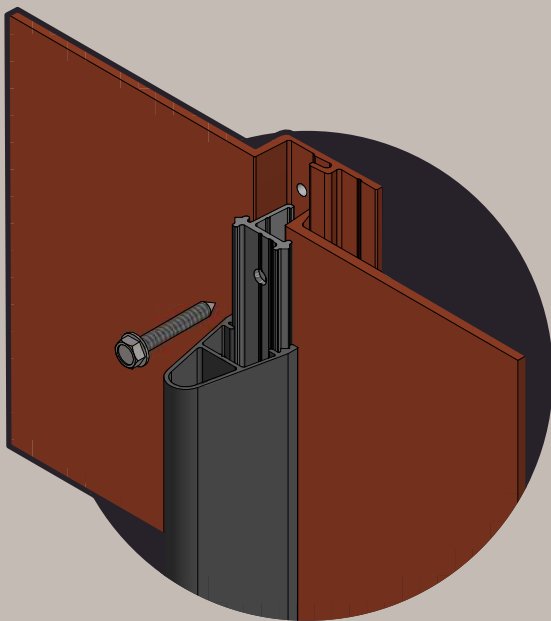
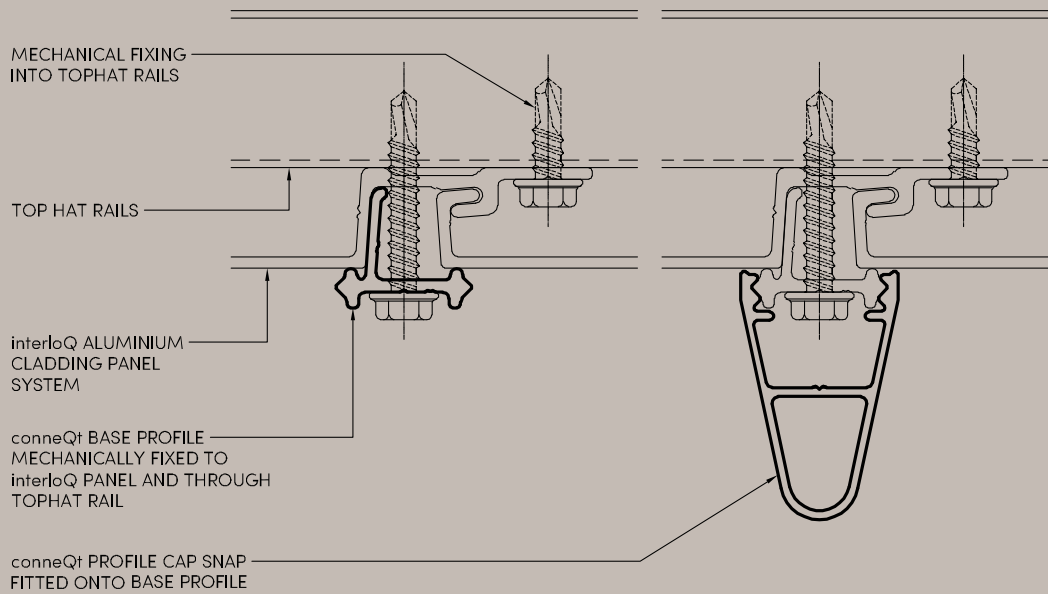


## Assembly

interloQ can be fixed with rivets or screws depending on the required specifications. Select the fixings' material to suit the application and consider thermal expansion and building movement.

It is not recommended to weld interloQ panels due to the heat generated having a potential affect on the finished coating.

# conneQt



conneQt is a unique, versatile adaptor compatible with interloQ.

With concealed fixings, the conneQt base and adaptor seamlessly attaches to transform the recessed grooves of the interloQ panels to a raised ridge, creating a completely different appearance.

Available separately to interloQ, the conneQt adaptor provides builders and architects with full creative freedom.





# System Wall Chart



**CQ021**  
**conneQt 25**  
**IQ BASE**

ALLOY: 6060-T5  
A.P.: 100mm  
P.P.: 100mm

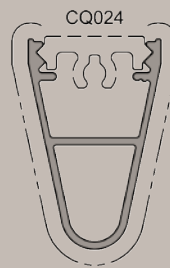
NO VISIBLE SURFACE



**CQ024**  
**conneQt 25**  
**FLAT BASE**

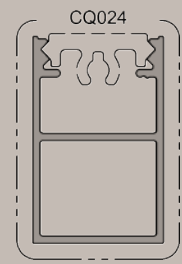
ALLOY: 6060-T5  
A.P.: 100mm  
P.P.: 100mm

NO VISIBLE SURFACE



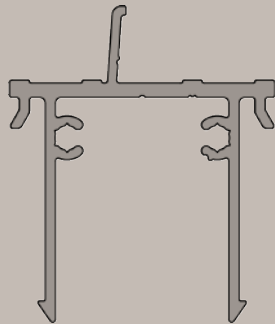
**CQ022**  
**conneQt 25**  
**RADIUS CAP**

ALLOY: 6060-T5  
A.P.: 160mm  
P.P.: 100mm



**CQ023**  
**conneQt 25**  
**SQUARE CAP**

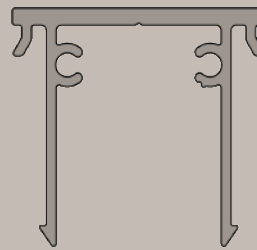
ALLOY: 6060-T5  
A.P.: 182mm  
P.P.: 120mm



**CQ101**  
**conneQt 50**  
**IQ BASE**

ALLOY: 6060-T6  
A.P.: 337mm  
P.P.: 337mm

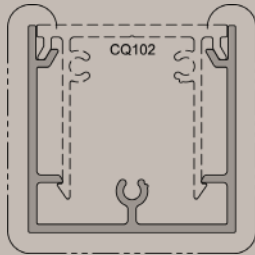
NO VISIBLE SURFACE



**CQ102**  
**conneQt 50**  
**FLAT BASE**

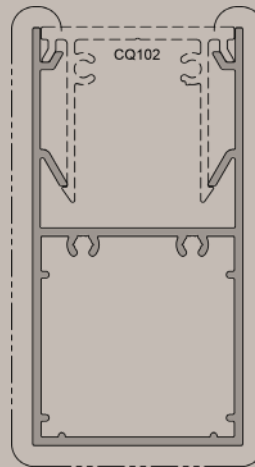
ALLOY: 6060-T6  
A.P.: 308mm  
P.P.: 308mm

NO VISIBLE SURFACE



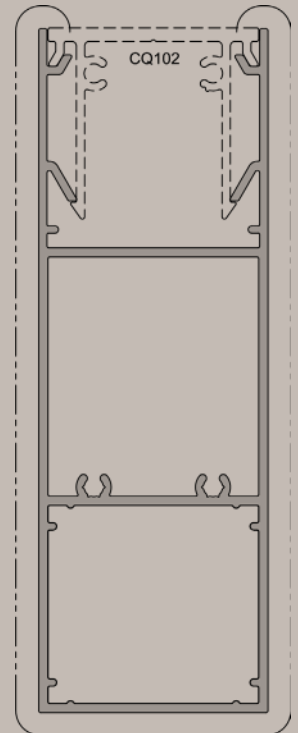
**CQ103  
conneQt 50  
50mm BATTEN**

ALLOY: 6060-T6  
A.P.: 376mm  
P.P.: 251mm



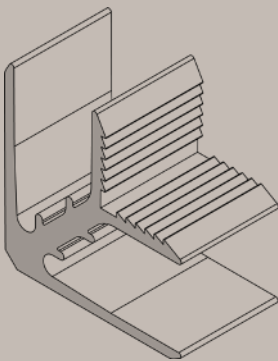
**CQ104  
conneQt 50  
100mm BATTEN**

ALLOY: 6060-T6  
A.P.: 484mm  
P.P.: 323mm



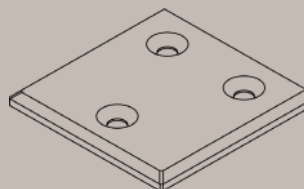
**CQ105  
conneQt 50  
150mm BATTEN**

ALLOY: 6060-T6  
A.P.: 542mm  
P.P.: 362mm



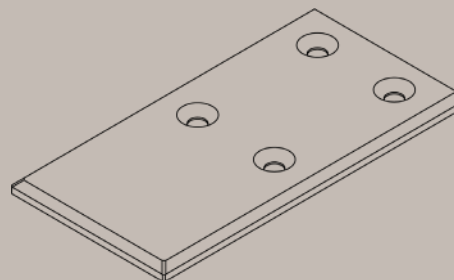
**CA306  
conneQt 50  
CORNER STAKE**

MATERIAL: ALUMINIUM 6060/T5  
FINISH: MILL FINISH  
UNIT: EACH



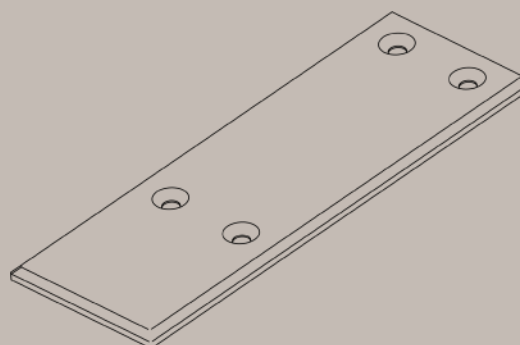
**CA303  
conneQt 50 ENDCAP  
FOR CQ103**

MATERIAL: CAST ALUMINIUM  
FINISH: MILL FINISH  
UNIT: EACH



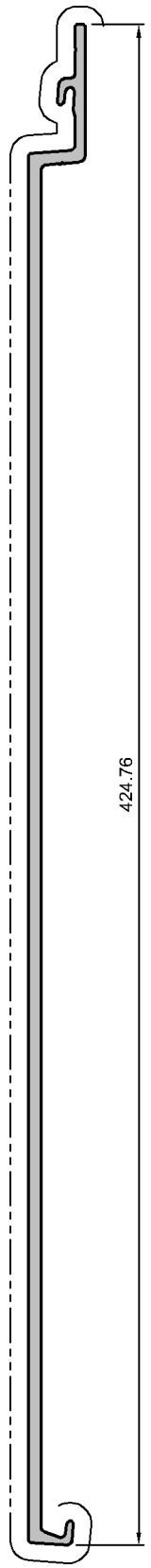
**CA304  
conneQt 50 ENDCAP  
FOR CQ104**

MATERIAL: CAST ALUMINIUM  
FINISH: MILL FINISH  
UNIT: EACH

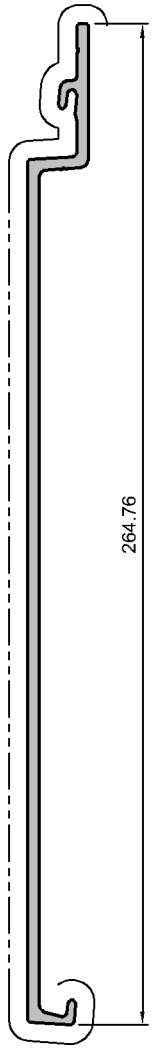


**CA305  
conneQt 50 ENDCAP  
FOR CQ105**

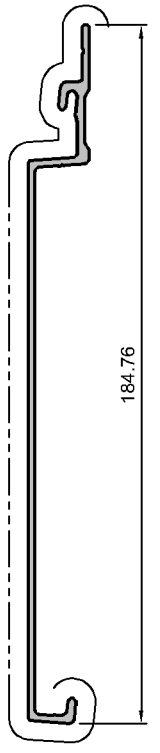
MATERIAL: CAST ALUMINIUM  
FINISH: MILL FINISH  
UNIT: EACH



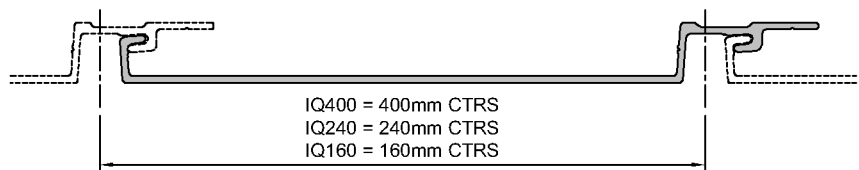
IQ400	
400mm CLADDING PANEL	
A.P:	918 mm
P.P:	540 mm
COVER:	2.50 Lm / m <sup>2</sup>

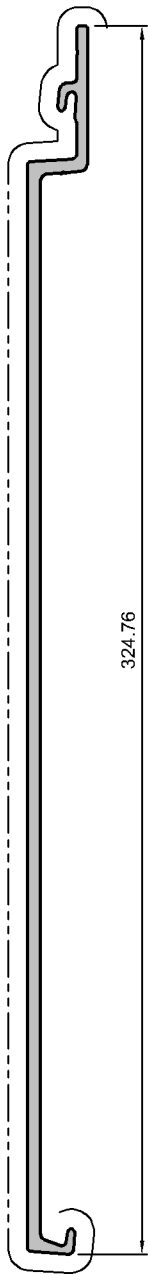


IQ240	
240mm CLADDING PANEL	
A.P:	599 mm
P.P:	396 mm
COVER:	4.17 Lm / m <sup>2</sup>

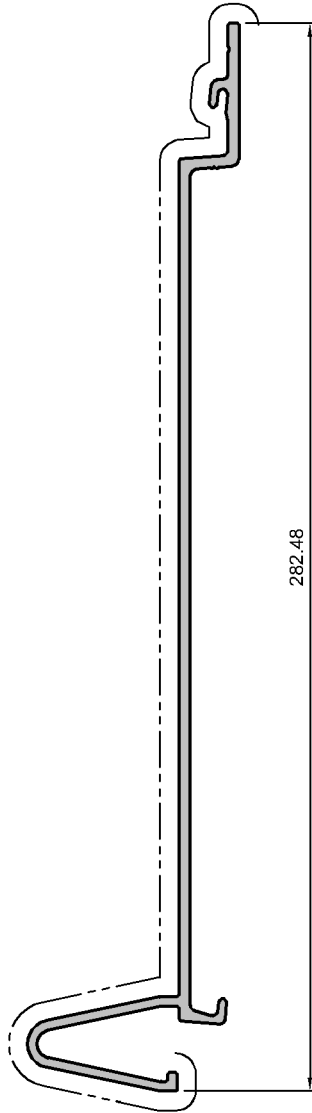


IQ160	
160mm CLADDING PANEL	
A.P:	444 mm
P.P:	296 mm
COVER:	6.25 Lm / m <sup>2</sup>

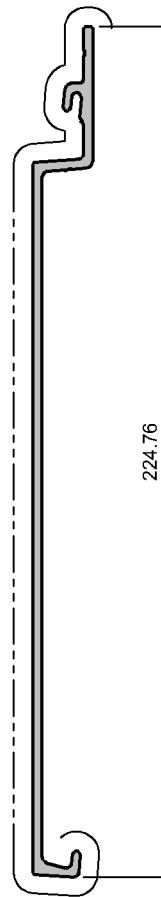




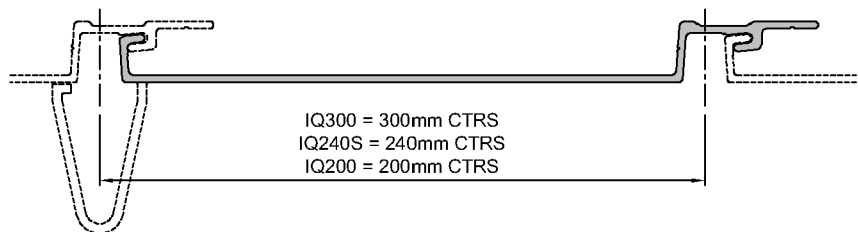
IQ300	
300mm CLADDING PANEL	
A.P:	717 mm
P.P:	474 mm
COVER:	3.33 Lm / m <sup>2</sup>

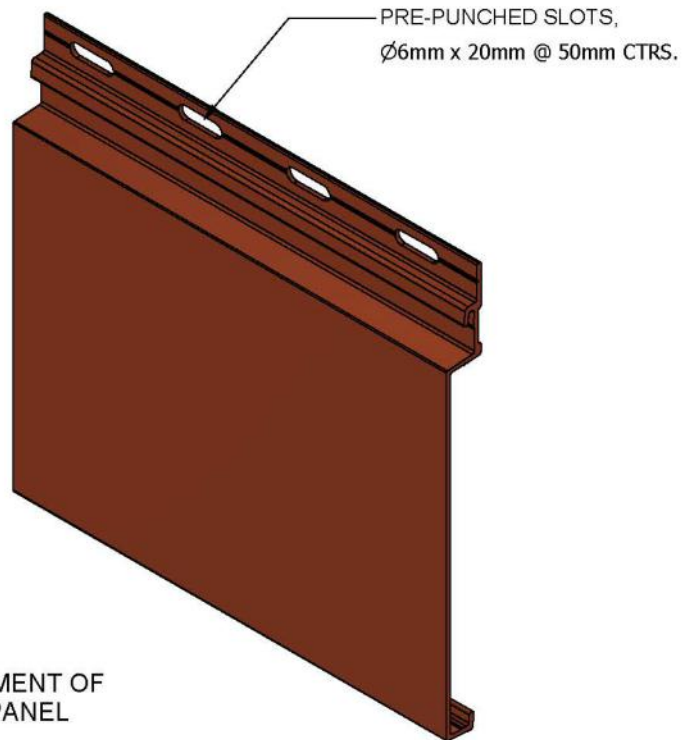
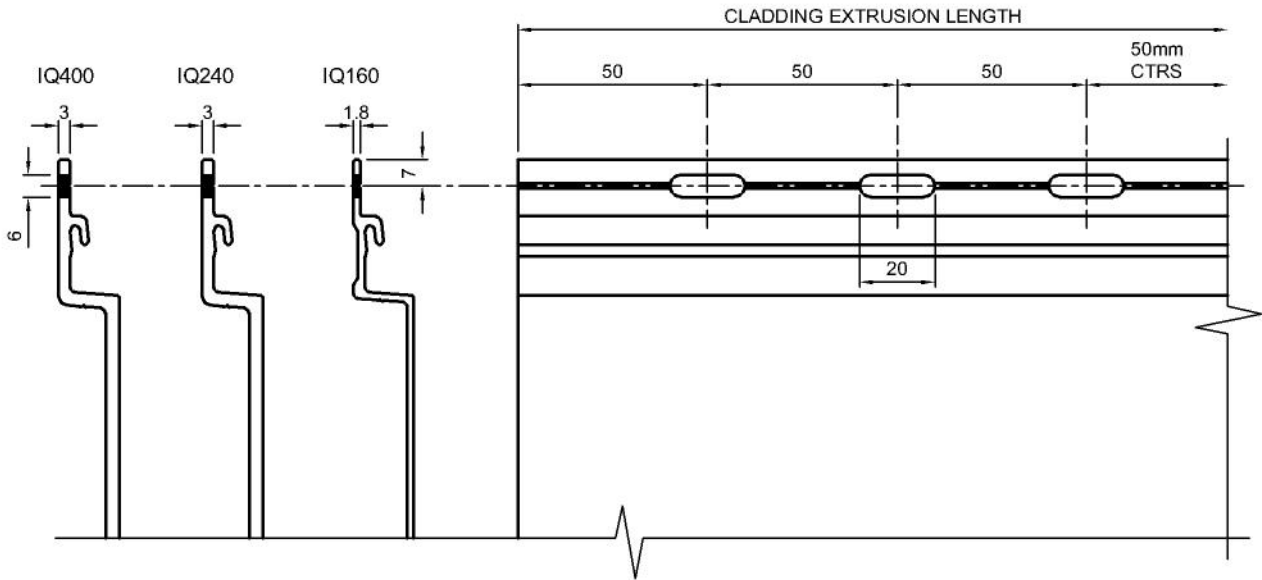


IQ240S	
240mm SEAMED CLADDING PANEL	
A.P:	770 mm
P.P:	508 mm
COVER:	4.17 Lm / m <sup>2</sup>



IQ200	
200mm CLADDING PANEL	
A.P:	520 mm
P.P:	356 mm
COVER:	5.00 Lm / m <sup>2</sup>





TYPICAL ARRANGEMENT OF interloQ CLADDING PANEL SLOTTING.



# Extra information

---



## Handling and Storage

Care must be taken during transport, fabrication and installation to avoid dents and scratches. For best results please note the following:

- Avoid contact with sharp edges as these may scratch the finished surface.
- Ensure swarf is removed from the surface during and after fabrication.
- Allow a minimum of two people to manoeuvre full length panels to avoid scratching or injury.
- When stacking interloQ panels ensure surfaces are clean, dry and free from swarf, dirt and foreign objects. Allow separation material between finished surfaces.
- interloQ can be stored horizontally in a flat, cool, dry environment with relatively stable temperatures as well as vertically in a correctly supported frame.
- When stacking cases ensure to adopt safe work procedures to avoid damage and injury.



## Sustainability

interloQ Aluminium panels are 100% recyclable offering our community and environment a sustainable choice commitment.



## Cleaning & Maintenance

To extend the life of interloQ products and to comply with warranty requirements, a simple, regular maintenance program should be implemented.

The effects of ultra-violet light, atmospheric pollution, dirt, grime and airborne salt deposits can all accumulate over time and should be removed at regular intervals.

As a general rule, cleaning should take place every three months. In areas where pollutants are more prevalent, such as beachfront houses and industrial or geothermal areas, then a cleaning program should be carried out on a more frequent basis ie; every one to two months.

- Carefully remove any loose surface deposits with a wet sponge.
- Use a soft brush (non-abrasive) and a dilute solution of a mild detergent, eg; pH-neutral liquid hand dishwashing detergent in warm water (DO NOT use solvents) to remove dust, salt and other deposits.
- DO NOT use turpentine, white spirits, thinner or other aggressive solvents on powder coating (these may be harmful to the extended life of the powder coated surface and should be avoided as the damage may not be visible immediately and may take up to twelve months to appear)
- DO use isopropyl alcohol or Methylated spirits and rinse with warm soapy water.
- DO NOT rub powder coating excessively, especially metallic finishes.
- Keep sunscreens away from powder coating, some sunscreens adversely affect painted finishes.
- Ensure you thoroughly rinse the surfaces with clean fresh water after cleaning to remove all residues.



## Warranty

interloQ surface finish warranty is based on the selected finish, product range.  
Contact Valmond & Gibson for more information on warranties.

# VALMOND & GIBSON

FACADE SYSTEMS

For information about  
Valmond & Gibson contact:  
[sales@valmondgibson.com](mailto:sales@valmondgibson.com)  
1300 097 999

## Disclaimer

While the information provided concerning Valmond & Gibson products is accurate according to the tests and measures available to us, the details shared in this document are general in nature and do not constitute project-specific building, construction, or fire-safety advice. Before acting on any information within this document, you should assess its suitability in relation to your project's specific parameters and requirements. Valmond & Gibson products are considered suitable or compliant only after approval from building and construction professionals associated with the relevant projects and developments. For further insight on this topic, please contact Valmond & Gibson at 1800 007 175 or email [sales@valmondgibson.com](mailto:sales@valmondgibson.com). We're here to assist with any questions or concerns.



Or visit [valmondgibson.com](http://valmondgibson.com) where you'll find resources detailing:

- Architectural details
- Finishing options and colour selections
- Valmond & Gibson technical data
- Product brochure downloads
- Machining & installation guides
- Specifiers kit
- Warranty information
- Contact information

All colours represented in all imagery have been reproduced as a guide only.

For precise colour representation please refer to physical product samples.

You can order Valmond & Gibson samples online at [valmondgibson.com](http://valmondgibson.com)

This brochure has been designed and printed in Australia.



interlo@  
conne@t

VALMOND  
& GIBSON

[valmondgibson.com](http://valmondgibson.com)

[sales@valmondgibson.com](mailto:sales@valmondgibson.com)

1300 097 999