



# CAPABILITY STATEMENT

VALMOND  
& GIBSON

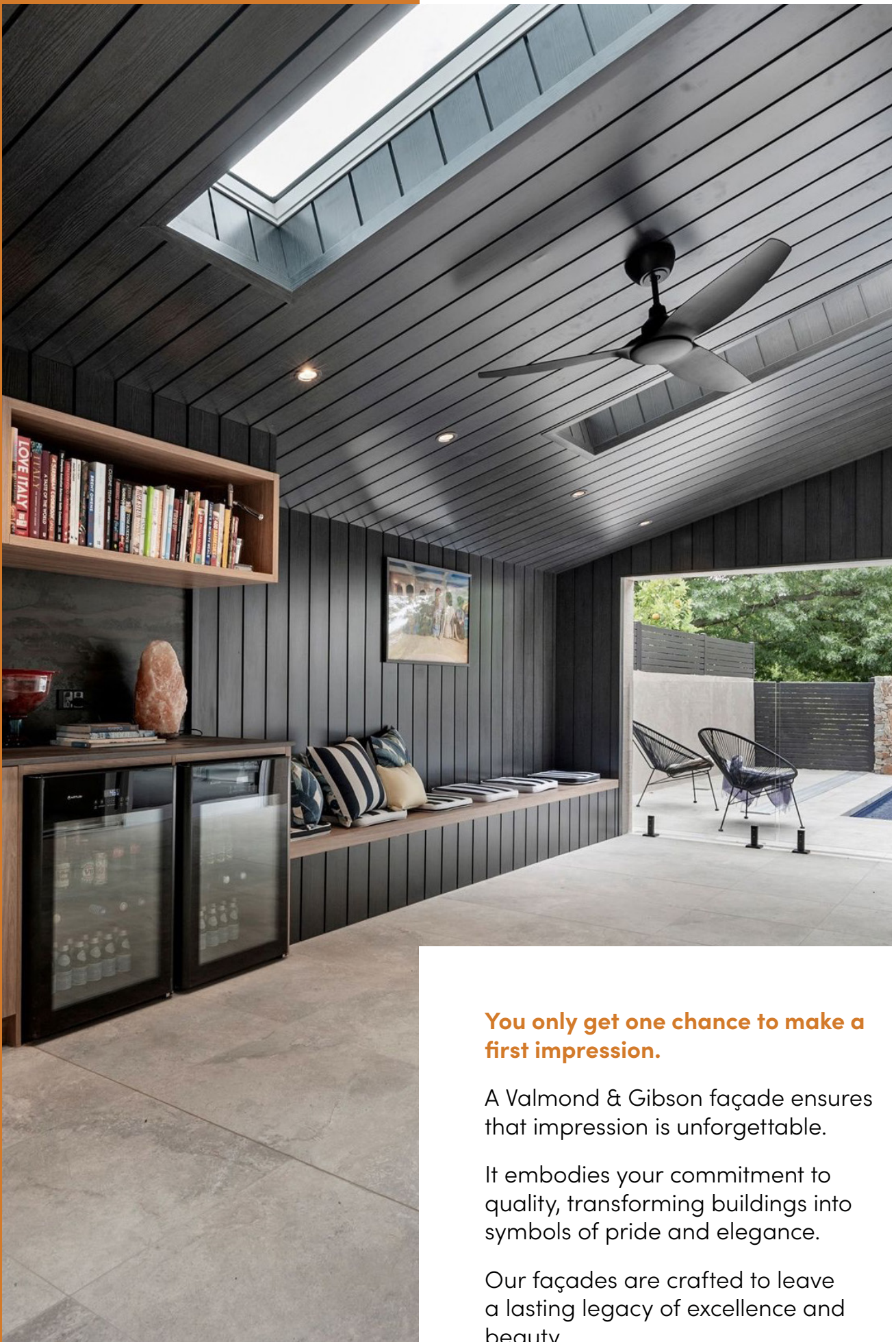
---

# WHERE FIRST IMPRESSIONS LAST

## Our Commitment:

- ✓ BUILDING COMPLIANCE
- ✓ BUILDING SAFETY
- ✓ BUILDING PERFORMANCE





**You only get one chance to make a first impression.**

A Valmond & Gibson façade ensures that impression is unforgettable.

It embodies your commitment to quality, transforming buildings into symbols of pride and elegance.

Our façades are crafted to leave a lasting legacy of excellence and beauty.

---

# CORE COMPETENCIES

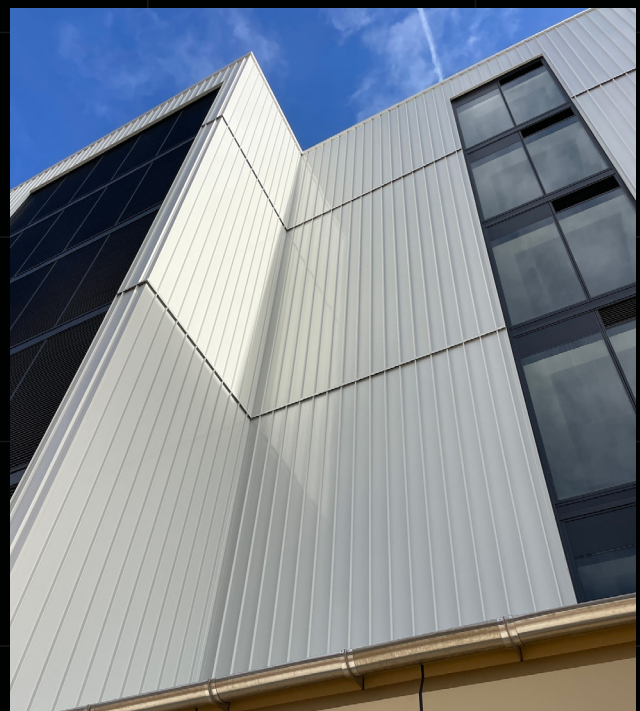
**Valmond & Gibson excels in delivering state-of-the-art façade and cladding solutions, including non-combustible aluminium cladding systems like element13 and interloQ, as well as the V&G 165CW high-performance curtain wall system.**

Our projects demonstrate our capability to meet diverse client needs across various regions, ensuring compliance with the latest safety and environmental standards.

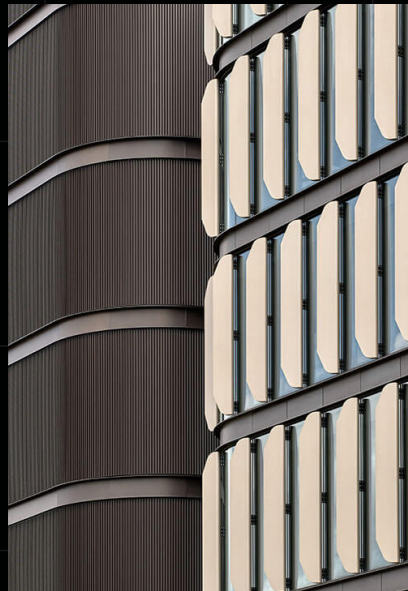
Notable projects include:



***Garden Island Defence Live-in Accommodation buildings***



*Brindabella 6 ACT  
(multi-award-winning  
commercial office  
project)*





*Major recladding projects across Australia*



---

# MANAGEMENT AND TEAM PROFILE

At Valmond & Gibson, our management team embodies the core values of **trust, dedication, and continuous improvement**, ensuring these principles are actively lived within our organisation every day.

Our team is led by:



**Michael O'Grady, Managing Director**

With a wealth of industry experience, Michael drives our vision and strategic direction.



**Sean Russell, Operations Manager**

Overseeing operational efficiency and project delivery.



**Jacob Gillespie, Business Development Manager**

Focusing on expanding our market presence and client relationships.



**Rod Beel, Technical Manager**

Ensuring technical excellence and innovation in our product offerings.



---

# DESCRIPTION OF PRODUCTS

Valmond & Gibson offers a **comprehensive range of façade systems, designed in-house and manufactured by our trusted partners** to guarantee the highest level of safety and compliance with current industry standards.

Our product lineup includes:



InterloQ is our go-to product for architects due to its sleek, modern look, low maintenance, high durability, and non-combustibility.

Especially favoured in the build-to-rent market for its cost-effectiveness in both materials and labour, InterloQ has shown long-term performance and ease of installation, benefiting all stakeholders.

The product is ideal for the single dwelling residential market, and we expect strong demand over the short to medium term.



## element 13

Element13 continues to be a staple in the façade systems industry, renowned for its reliability and versatility.

It has been used extensively in hundreds of re clad projects and new constructions, providing a durable and compliant solution that meets modern building safety and aesthetics standards.

Its proven track record in both small and large-scale projects has cemented its reputation as a go-to product for builders and developers seeking consistent performance and quality.



**V&G 165CW**

Our high-performance curtain wall system has become integral to many government infrastructure projects, such as health and defence, particularly where local manufacturing is critical or where the risk of dependence on the China supply chain is a concern.

Valued for its energy efficiency and ability to meet stringent government specifications, this product's use in numerous high-profile projects has demonstrated its reliability and the strategic advantage of having a locally manufactured option that guarantees timely delivery and superior quality.

HAY ST. PERTH

“Our project needed a timeless façade that met current and future standards.

Valmond & Gibson’s element13 and the smooth installation process **exceeded expectations**, even amidst industry challenges.”

REDHILL PARTNERS



“Valmond & Gibson provided **unmatched technical detail and proactive management.**

Exceptional product, reliable service, and timely delivery made the project a success.”

JWLAND



THE GROUNDS, IVANHOE EAST



RISE APARTMENTS

“Valmond & Gibson is the most responsive company I’ve dealt with.

**Quick service, great pricing,  
and accurate shipping times.**

Their team is always available and helpful”

DUNRITE LININGS

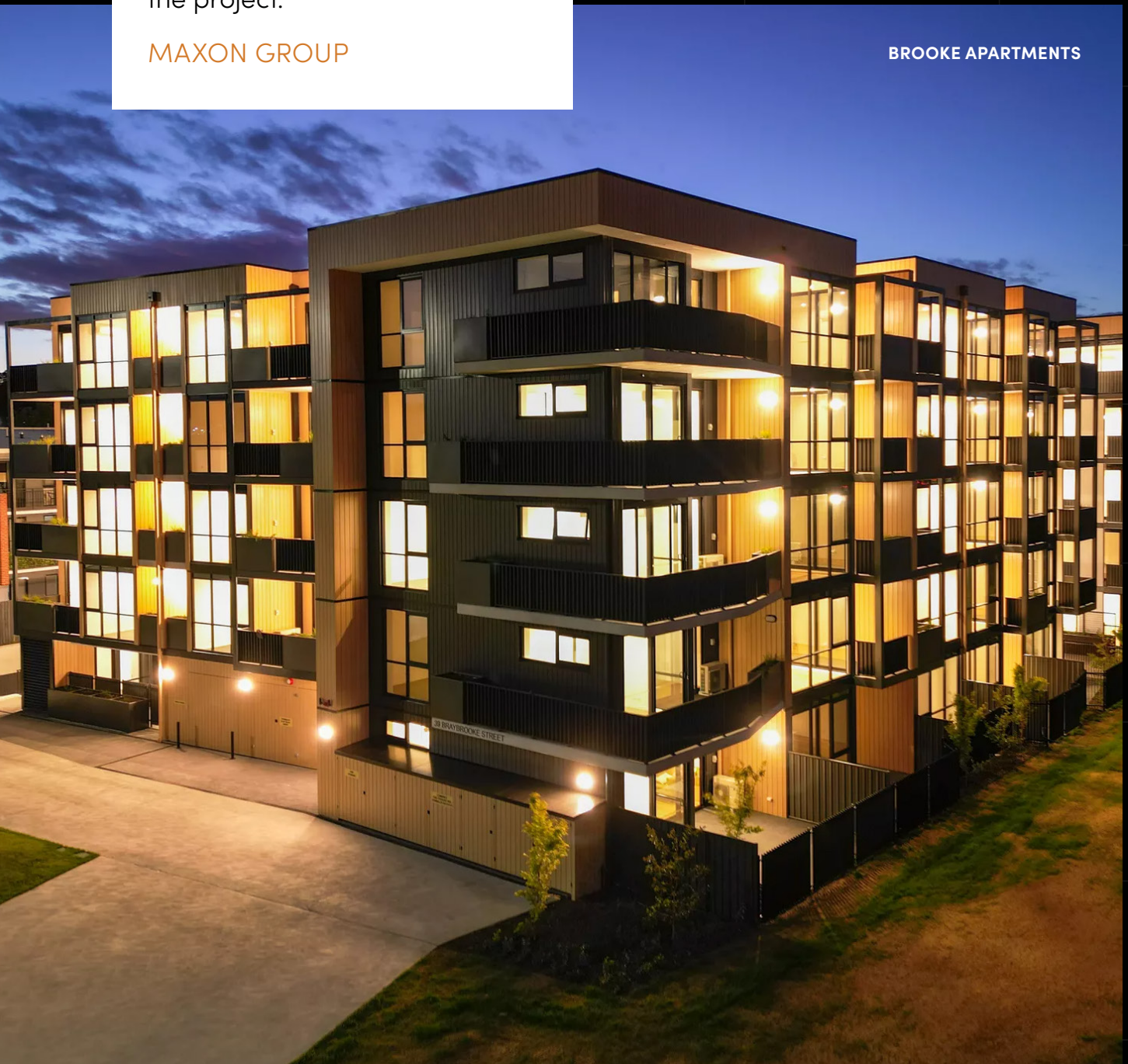
**Service and finish quality  
were excellent.**

Valmond & Gibson custom-made a powder-coated cap, resulting in an amazing finish.

Their team was responsive and easy to work with throughout the project.

**MAXON GROUP**

**BROOKE APARTMENTS**





**VALMOND  
& GIBSON**

Valmond & Gibson Pty Ltd

Address

Building C, 23-25 Princes Road East,  
Auburn NSW 2144, Australia

Phone

1300 097 999

Email

[michael.ogrady@valmondgibson.com](mailto:michael.ogrady@valmondgibson.com)

ABN

85 637 626 558

ACN

637 626 558

Website

[www.valmondgibson.com](http://www.valmondgibson.com)